



Drawer Base Cabinets Assembly instructions

Important: When attaching two cabinets together, pre drill holes on the face frame to avoid material split.

This assembly instruction applies to **DB15 DB18 DB21 DB24**.

Parts included:

Item	Qt
A Face Frame	1
B Side Panel (right and left)	2
C Bottom	1
D Back Panel	1
E Toe Kick	1
F Corner Braces	4
G 1/2" Flat Head Screw (for Drawer slide front)	6
H 1/2" Round Head Screw (for corner brace)	8

Item	Qt
I Drawer Face	3
J Drawer Back	3
K Drawer Bottom	3
L Drawer Sides (3 left, 3 right)	6
M Drawer Slide rail (3 left, 3 right)	6
N Drawer Slide Holder	6
O Large Head Screw (for slide holder)	12

Step by step

1. Check and count the items in the box before your installation. If you are short any piece, stop and call the supplier. Otherwise, follow the steps below.
2. Put the face frame (A) face down on a flat soft working surface (Figure 2).
3. Install side panels (Figure 3): insert right and left side panels (B) into the grooves of face frame (A) and align the cam lock connectors (Figure 3). Lock the cam lock with a screwdriver by turning the screw 180 degree clockwise (Figure 1).
4. Install the bottom (Figure 4): gently spread side panels and insert bottom (C) into the grooves of side panel (B) until it touches the face frame (A). Align it and lock each cam lock.
5. Install the back panel and toe kick (Figure 5 & 6): before you start this step, put the back panel (D) on a flat surface face up. Install the drawer rail holders (N) in the pre-spotted area on the back panel (Figure 5). The opening of the holders should be facing towards each other. Secure them with 2 round head screws (H) (Figure 5). Then put the back panel (D) at rear of side panel (B) (Figure 6). Align it and lock each cam lock. Install the toe kick by locking the cam lock at both ends (Figure 6).
6. Install the drawer slide rails (Figure 7): insert the drawer slide rails backend into the holder (N) previously installed (step 5) on the back panel (D). Then secure the drawer rail front end with flat head screws using the predrilled holes in the face frame. Repeat this step for each drawer slide rail.
7. Drawer assembly (Figure 8): place the drawer-face (A) face down on a flat soft working surface. Align the two drawer sides (L) and lock the cam lock. Slide drawer bottom (K) into the grooves of drawer sides (L). Then place drawer back (J) and lock the cam lock. Repeat this step for more drawers.
8. Install Corner Braces (Figure 9) and insert the drawer: place the corner braces (F) on each top corner of the cabinet and secure them with 1/2" Corner Brace screws. Slide the drawer into the rail and check the drawer position and adjust the drawer slide rail location for the best operation if necessary.

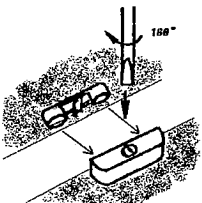


Figure 1

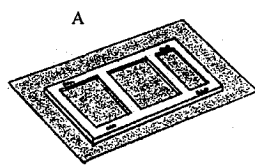


Figure 2

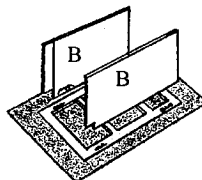


Figure 3

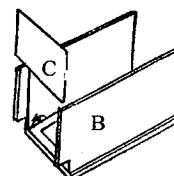


Figure 4

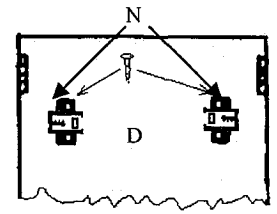


Figure 5

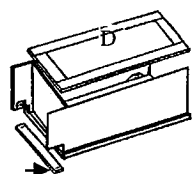


Figure 6

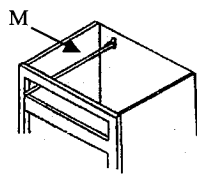


Figure 7

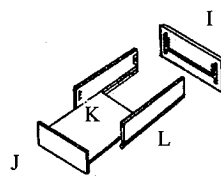


Figure 8

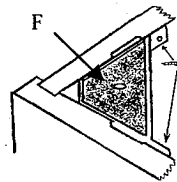


Figure 9

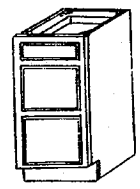


Figure 10