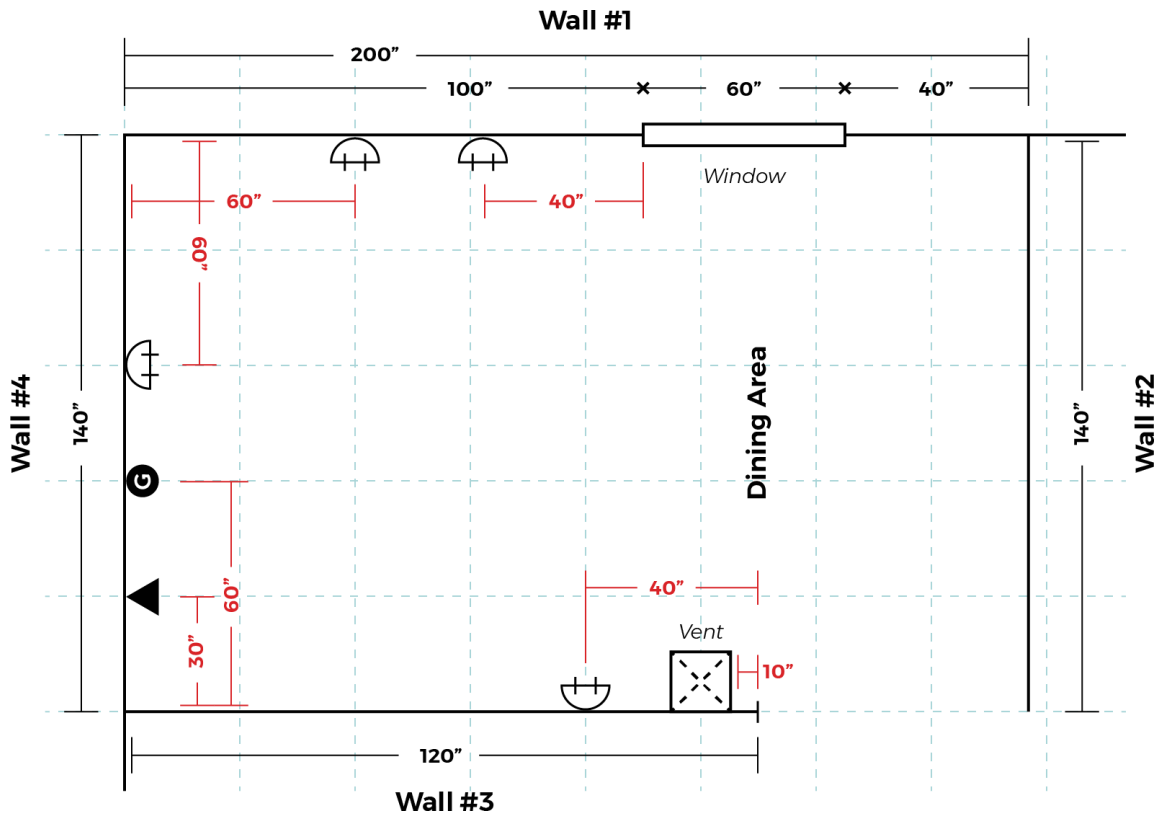


How to Measure for New Kitchen Cabinets

Floor Plan

You will need to carefully configure the exact dimensions of your room. Your completed floor plan should resemble the diagram below. Be sure to show exact locations of doors, windows, hood vents, exhaust, gas lines, water lines, drain lines, outlets, switches, light fixtures, and heat vents



How to Measure for New Kitchen Cabinets

Using a tape measure and graph paper, measure your room using the following steps:

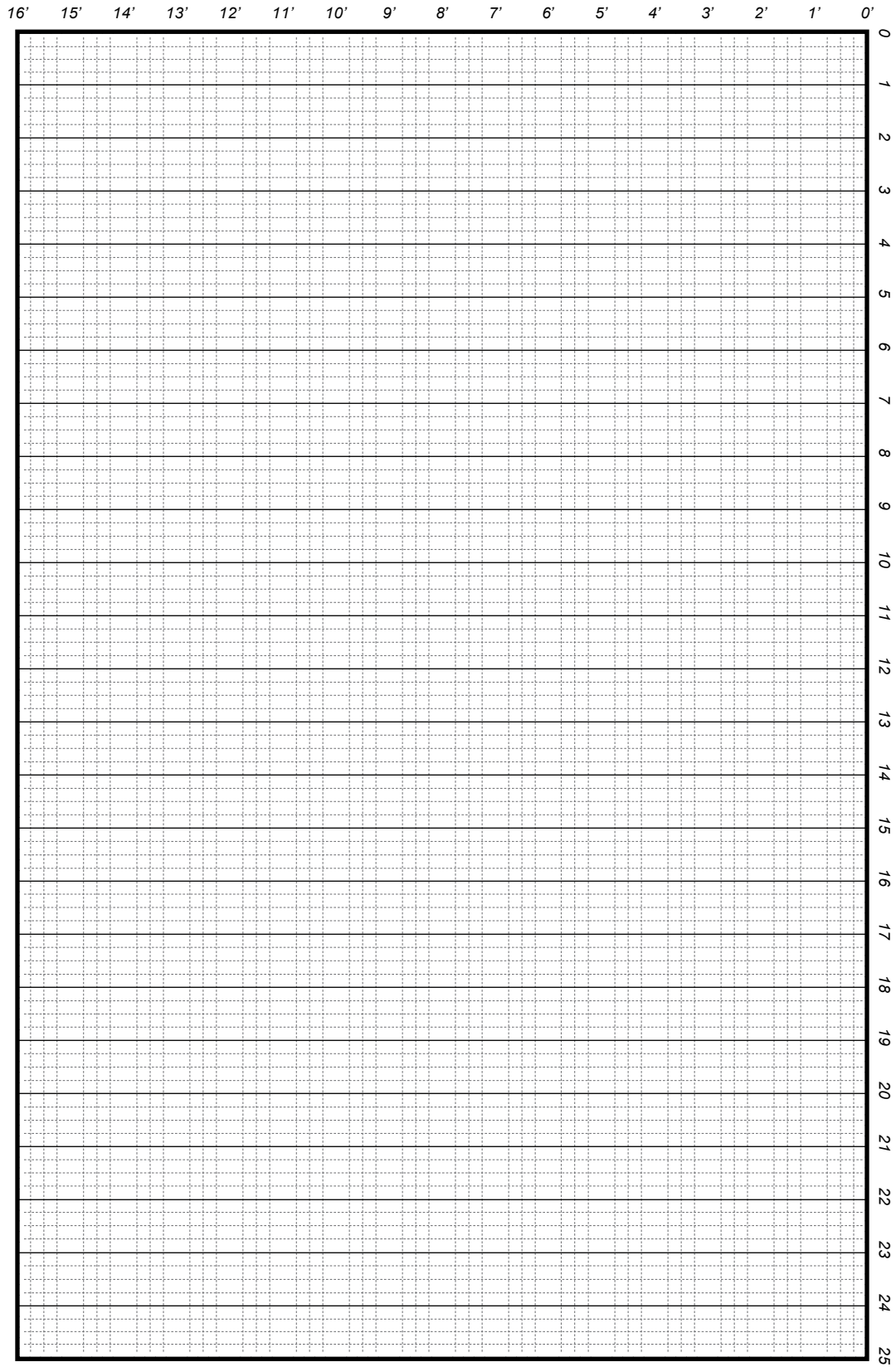
Horizontal Measurement

1. Measure from wall to wall at 36" height.
2. Measure from corner to window or door opening.
3. Measure across opening from trim edge to trim edge.
4. Measure from edge of trim to far wall. Compare sum of #2, #3, and #4.
5. Mark exact location of water, drain, gas lines, electrical outlets, and switches on drawing.
6. Measure from wall to wall above window and compare to #1.

Vertical Measurement

7. Measure from floor to windowsill.
8. Measure from windowsill to top of window.
9. Measure from top of window to ceiling.
10. Measure from floor to ceiling
 - Compare to sum of #7, #8, and #9.

Each large square represents 1 square ft. Each small square represents 3".



Appliance & Fixture Information

List appliances on drawing. Be sure to indicate 220-volt outlets, wallmounted appliances and fixtures, telephone, and cable locations. Also, note gas lines and appliance locations.

| | Type | Size W x D x H | Hinge Position L/R (Facing Appliance) |
|--------------|------|----------------|--|
| Refrigerator | | | |
| Range | | | |
| Cooktop | | | |
| Exhaust Hood | | | |
| Wall Oven | | | |
| Microwave | | | |
| Dishwasher | | | |
| Sink | | | |
| Disposal | | | |
| Compactor | | | |
| Freezer | | | |
| Other | | | |